

had no objection to the plea and life sentence because it brings the case to an end months sooner than anticipated.

"It did come to fruition quicker than we anticipated," Emmons said. "This has not been quick, though. The family has been going through this for months."

Diana Ross did not address the court during the hearing, because she was unprepared for the plea and sentencing, Emmons said. Emmons said the judge is allowing Diana Ross to submit a victim impact statement

for himself in Kentucky politics, spending some 15 years in the state legislature. He failed to win re-election to the state House in 2006.

for himself in Kentucky politics, spending some 15 years in the state legislature. He failed to win re-election to the state House in 2006. He had been serving as deputy secretary of the Cabinet for Health and Family Services, but was put on administrative leave and then resigned after he was charged with domestic violence against Ross, with whom he had lived for several months. Under a protective order obtained by Ross, Nunn also was prohibited from possessing firearms.

for himself in Kentucky politics, spending some 15 years in the state legislature. He failed to win re-election to the state House in 2006. He had been serving as deputy secretary of the Cabinet for Health and Family Services, but was put on administrative leave and then resigned after he was charged with domestic violence against Ross, with whom he had lived for several months. Under a protective order obtained by Ross, Nunn also was prohibited from possessing firearms.

for himself in Kentucky politics, spending some 15 years in the state legislature. He failed to win re-election to the state House in 2006. He had been serving as deputy secretary of the Cabinet for Health and Family Services, but was put on administrative leave and then resigned after he was charged with domestic violence against Ross, with whom he had lived for several months. Under a protective order obtained by Ross, Nunn also was prohibited from possessing firearms.

for himself in Kentucky politics, spending some 15 years in the state legislature. He failed to win re-election to the state House in 2006. He had been serving as deputy secretary of the Cabinet for Health and Family Services, but was put on administrative leave and then resigned after he was charged with domestic violence against Ross, with whom he had lived for several months. Under a protective order obtained by Ross, Nunn also was prohibited from possessing firearms.

for himself in Kentucky politics, spending some 15 years in the state legislature. He failed to win re-election to the state House in 2006. He had been serving as deputy secretary of the Cabinet for Health and Family Services, but was put on administrative leave and then resigned after he was charged with domestic violence against Ross, with whom he had lived for several months. Under a protective order obtained by Ross, Nunn also was prohibited from possessing firearms.

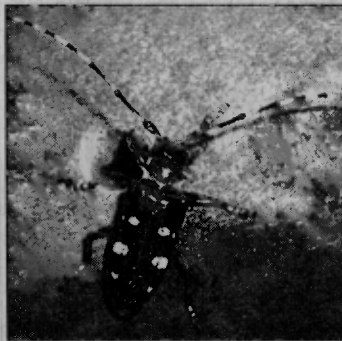
for himself in Kentucky politics, spending some 15 years in the state legislature. He failed to win re-election to the state House in 2006. He had been serving as deputy secretary of the Cabinet for Health and Family Services, but was put on administrative leave and then resigned after he was charged with domestic violence against Ross, with whom he had lived for several months. Under a protective order obtained by Ross, Nunn also was prohibited from possessing firearms.

for himself in Kentucky politics, spending some 15 years in the state legislature. He failed to win re-election to the state House in 2006. He had been serving as deputy secretary of the Cabinet for Health and Family Services, but was put on administrative leave and then resigned after he was charged with domestic violence against Ross, with whom he had lived for several months. Under a protective order obtained by Ross, Nunn also was prohibited from possessing firearms.

for himself in Kentucky politics, spending some 15 years in the state legislature. He failed to win re-election to the state House in 2006. He had been serving as deputy secretary of the Cabinet for Health and Family Services, but was put on administrative leave and then resigned after he was charged with domestic violence against Ross, with whom he had lived for several months. Under a protective order obtained by Ross, Nunn also was prohibited from possessing firearms.

ry at 502-564-4496.

Visit www.aphids.usda.gov or www.beetlebusters.info for more information.



COURTESY U.S. FOREST SERVICE

An adult Asian longhorned beetle feeds on tree bark, leaves and twigs and leaves dime-sized exit wounds in the trunk.

FCHD gets national disease control grant

STATE JOURNAL STAFF REPORT

The Franklin County Health Department is one of ten local health departments nationally – the only one in Kentucky – to receive a direct grant from the National Association of County and City Health Officials to address chronic disease prevention and control through community partnerships that ad-

dress root causes of chronic diseases.

Initial funding for FCHD of \$15,000 will cover travel expenses to gain expertise on new policy and environmental changes related to chronic disease prevention and control. The FCHD award includes a potential for an additional \$25,000 for implementation of projects, yet to be determined.

Jennifer Wilson, Franklin County deputy judge executive, and Judy Mattingly, FCHD health education specialist and accreditation coordinator, are co-leading the project. Other current team members include Paula Alexander, FCHD director; Fred Goins, interim city manager; Rep. Derrick Graham; Lee Higginbotham, chief operating officer of Frankfort Regional Medical Center; Dorothy Schneider, retired state government employee and community volunteer; Sherrill Smith, pupil personnel administrator of Frankfort Independent Schools; Dave Steele, executive director of the Frankfort Y; Dr. Avinash Tope, Kentucky State University; Deborah Wigginton, director of pupil personnel for Franklin County Schools and Kim Cowherd, extension agent for the University of Kentucky Extension Office.

"Everyone knows that tobacco abuse, obesity and physical inactivity are linked



PHOTO SUBMITTED

Members of the Frankfort-Franklin County "ACHIEVE" team include Jennifer Wilson, front left, Judy Mattingly, Dr. Avinash Tope, Paula Alexander and Deborah Wigginton. From the back left are Fred Goins, Sherrill Smith, Dave Steele and Lee Higginbotham.

to heart disease, stroke and many cancers but not everyone realizes the connection between policy decisions and health outcomes," said Alexander. She said examples of healthy community policies include safe sidewalks and bike lanes, accessible and affordable fruit and vegetables and smoke-free schools.

The NACCHO funding for local health departments is part of a larger national program known as "ACHIEVE" (Action Communities for Health, Innovation, and Environmental Change), through which a

total of 40 recipients across the U.S. received awards for 2011. The competitive review process involved applications from 194 organizations. Kentucky now has a total of four ACHIEVE communities. Other than Frankfort, they include Ashland, Hopkinsville and Manchester. Ashland and Manchester are funded through the National Association of Chronic Disease Directors and Hopkinsville has been funded through the Y-USA.

The Frankfort group recently returned from a professional conference in Baltimore, Md.